

# BALLAD FOR A MUSIC BOX (INTRO)

EMILY REMLER FROM "EAST TO WEST"

ARRANGED FOR GUITAR BY ROB STRAIT

FREELY ♩ = 110

E-GT

(♩ =  $\overset{\textcircled{3}}{\text{♩}}$ )

1

Bm7b5 E7(ALT)

mf  
LETRING

	12	(12)	10	10	8	(8)	6	12	10
T	9	(10)	10	10	7	(7)		9	10
A		(10)			6	(6)		10	
B	9	(9)			7	(7)		9	0

Am7 D7(ALT) Gm7 Am7

LETRING

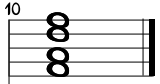
	10	8	7	6	5	3	5	5	8
8	9	10	4	4	3	3	5	5	
0		10	4	4	3	3	5	5	
			4	4	3	3	5	5	

Bb MA7 B7 Gm7 Am7 Db 13 C9 B9

LETRING

5	8	5	5	3	6	7	8	6	5	6	3	2
7			10	8			5	5	4	6	3	2
(8)			8				5	5	4	3	3	2
6			7				0	5	4	3	3	2

Bb MA37



#0  
LETRING

